

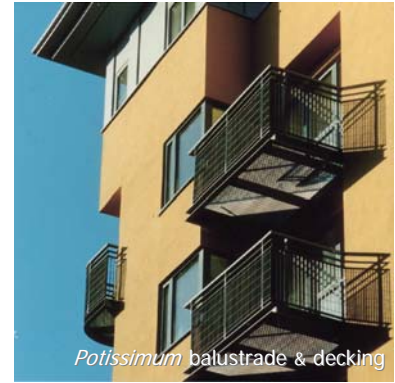
ORSOGRIL BALCONIES & BALUSTRADES



Dione



Dione: Potissimum 25x24 & 34x100



Potissimum balustrade & decking



Danae



Talia80



Potissimum 34x100mm

Applications: Orsogril's open mesh gratings offer a practical and economical solution for balconies and balustrades. The Talia® range of louvered grilles are appropriate where increased visual screening is required.

Manufacture: Mild-steel gratings and louvered grilles are made by an advanced electrofusion process for quality, strength and complete integrity. Panels are cut to size and framed with flat bars.

Fixing: Panels are supplied fully finished. Panel frames are designed with suitable fixing point according to individual requirement.

Performance: Gratings can accept the horizontal loadings for pedestrian barriers up to a 2m span in accordance with BS 6399-1:1996. All Potissimum gratings comply with NHBC anti-climb guidelines (aperture width <35mm) for schools, colleges and residential environments.

Finish: Hot-dip galvanized with optional polyester powder coat in all RAL colours.

Heel-Proof Balcony Decking & Stair Treads: Venustum (11x100mm), Potissimum (15x76mm), Barrot Antiquum (non-slip) or Anti-Vertigo (non-transparent).

Technical Assistance: Orsogril UK has over 25 years experience, offering a full design service and advice on loadings, bracket fixings and panel framings.

Product	mesh (mm)	flat/round bar (mm)	max panel (hwxw)
<i>Potissimum</i>	25x24 25x76 34x100	25x2/4.0ø 25x2/4.0ø; 40x24.0ø 25x2	4000x1000 4000x1000 4000x1164
<i>Danae</i>	42x132	25x2/4.0ø	4000x1136
<i>Dione</i>	42x44	25x2/4.0ø	4000x1136
<i>Quadra</i>	50x50	25x2/4.0ø	4000x1952
<i>Sterope3</i>	62x132	25x3/5.0ø	4000x1863
<i>Pleione</i>	62x66	25x2/5.0ø	4000x1862
<i>Britosterope</i>	62x132	30x4/6.5ø	4000x1864
<i>Talia80</i>	80%	louvre	2000x1642
<i>Talia100</i>	100%	louvre	2000x1642



Dione & Anti-Vertigo



Pleione



Sterope3



Barrot Antiquum

ORSOGRIL UK

tel 0131 441 1255

fax 0131 441 4161

sales@orsogril.co.uk

www.orsogril.co.uk